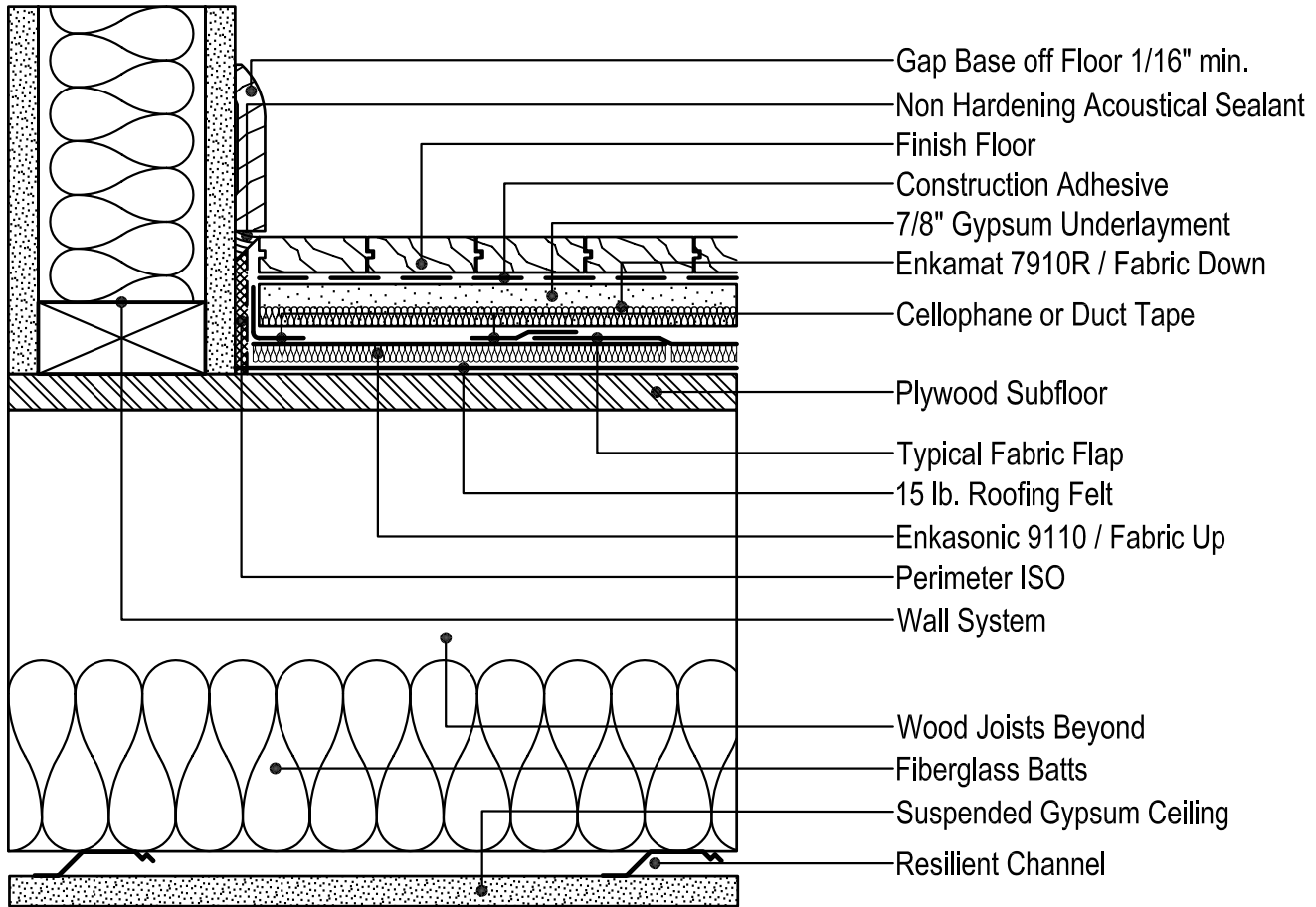


# EnkaTechDetails

Enkasonic 9110

## COLBOND



## ES 107

### Gypsum Topping/Wood Subfloor

Section View

Total Assembly Thickness 1 1/4"

### Referenced Products

Enkasonic 9110  
Enkasonic Perimeter ISO  
Enkamat 7910 R

#### Notice

The information provided in this technical detail is presented by way of illustration only and will not apply to every installation. Product application will vary as a result of site conditions, installation procedures and other factors specific to the particular

installation. Colbond Incorporated therefore cannot assume any liability for the manner of installation of its products, which manner of installation is left to the buyer in conjunction with the buyer's architect, engineers, builders or other professionals.

#### Colbond Inc.

Sand Hill Road  
PO Box 1057  
Enka, NC 28728  
enka-engineered@colbond.com

Tel. (+1) 828 665-5050  
Toll Free (+1) 800 365-7391  
Fax (+1) 828 665-5009  
www.colbond-usa.com