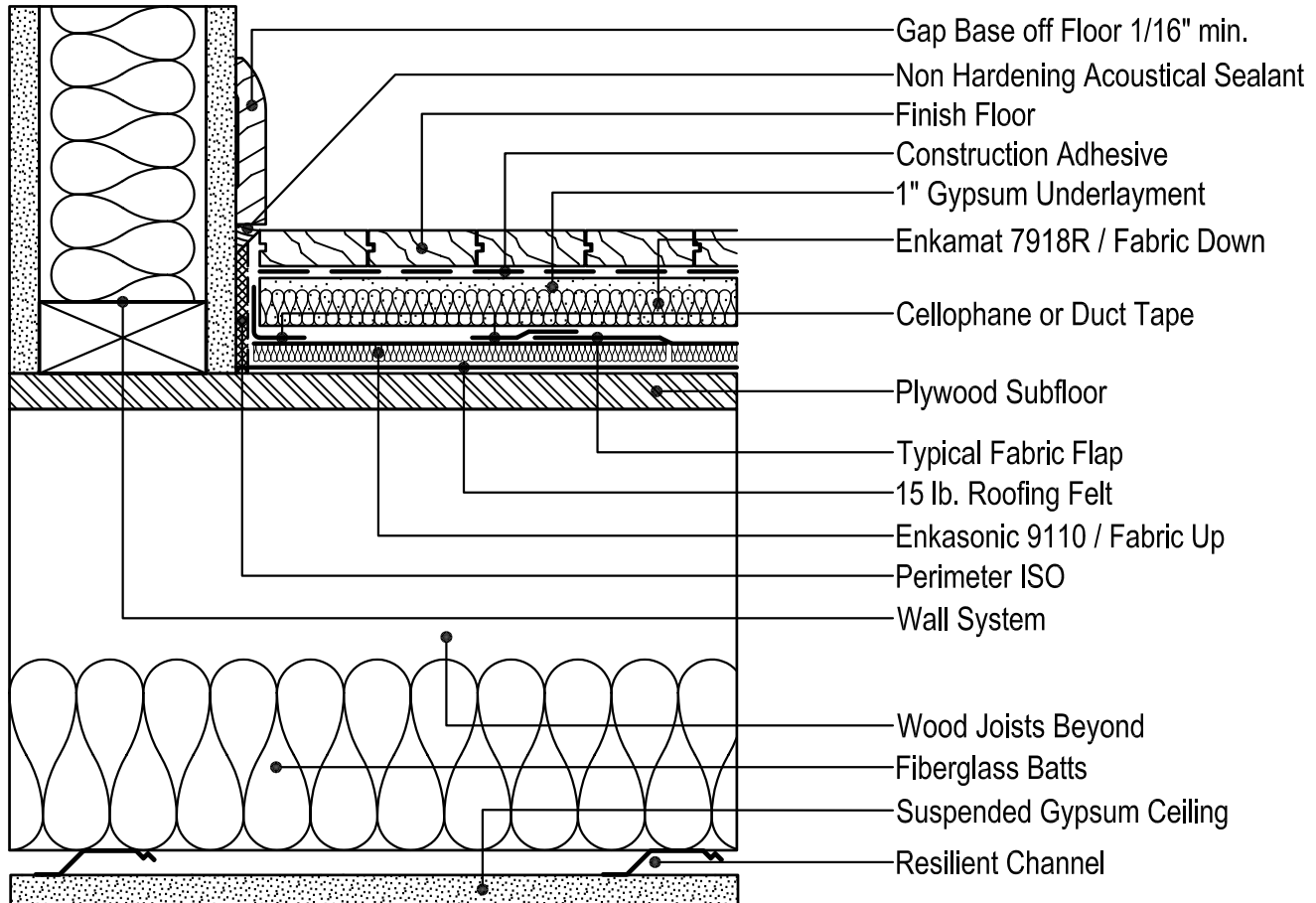


EnkaTechDetails

Enkasonic 9110

COLBOND



ES 106

Gypsum Topping/Wood Subfloor

Section View

Total Assembly Thickness 1 3/8"

Referenced Products

Enkasonic 9110
Enkasonic Perimeter ISO
Enkamat 7918 R

Notice

The information provided in this technical detail is presented by way of illustration only and will not apply to every installation. Product application will vary as a result of site conditions, installation procedures and other factors specific to the particular

installation. Colbond Incorporated therefore cannot assume any liability for the manner of installation of its products, which manner of installation is left to the buyer in conjunction with the buyer's architect, engineers, builders or other professionals.

Colbond Inc.

Sand Hill Road
PO Box 1057
Enka, NC 28728
enka-engineered@colbond.com

Tel. (+1) 828 665-5050
Toll Free (+1) 800 365-7391
Fax (+1) 828 665-5009
www.colbond-usa.com